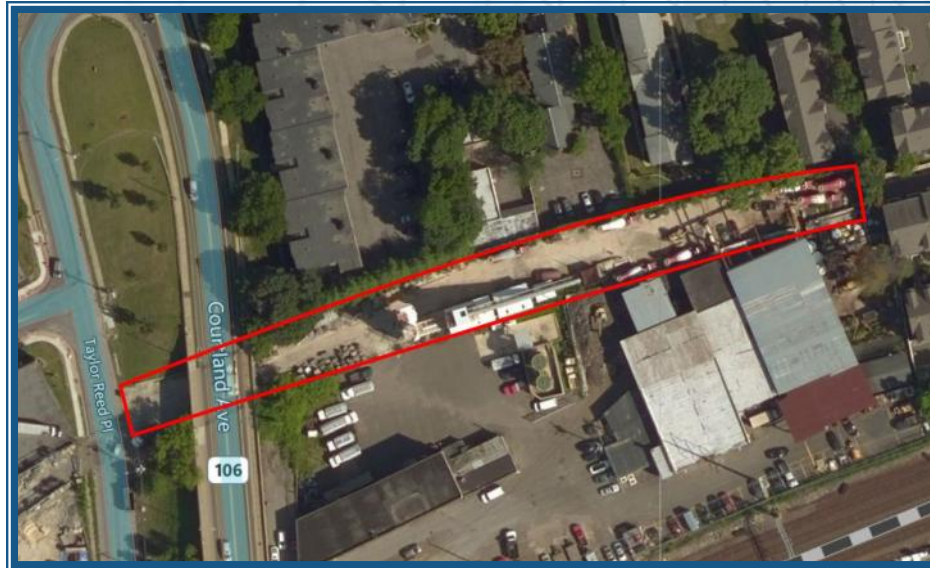


For Lease



.57 Acres of MG land in Stamford, with batch plant and 7 cement trucks.

Property

Available for lease off Courtland Avenue in Stamford, CT, .57 acres of heavy industrial land with concrete plant.

Vince Hagan dry batch plant, 80 ton cement silo, 200 ton 4 compartment aggregate bin with a turn head conveyor belt loading system. Natural gas fired hot water system, water on demand as needed.

7 Advance 4 axel front discharge mixers ranging from 1993-1998. Gated private yard.

\$215,000.00/year nnn

Contact: Fred Ryon - o: 203 388-8030 - c: 203-915-0621

Data has been gathered from various sources. Broker has made best efforts to verify the information, but does not guarantee its accuracy.