

For Sale



148 East Avenue, Unit 2G, Norwalk CT 06851



Medical Condo for Sale

Sabre Realty Group is pleased to present for sale this 1,612 square foot Medical Condo located in a large medical complex in Norwalk CT. Located on the second floor, the space is broken up into multiple rooms with 4 Exam rooms with sinks, 2 Prep rooms with sinks, waiting room, reception area, bath, 2 offices, storage as well as other various sized rooms. Office can also be reconfigured to suit specific needs. Building lobby opens up to a large 2 story atrium with security and a snack bar. Easy access from Exit 16 off I-95 (less than half mile) and ample on-site parking.

Offered at \$275,000

Contact: Fred Ryon - o: 203 388-8030 - c: 203-915-0621

www.SabreRealtyGroup.com
Commercial Real Estate & Appraisal Services
Purchase - Sale - Lease - Investment

Data has been gathered from various sources. Broker has made best efforts to verify the information, but does not guarantee its accuracy.

Office: (203) 388-8030
Fax: (203) 388-8031
28 Rapids Road, Stamford, CT 06905

Photos



Lobby



Entrance



Exam Room



Office



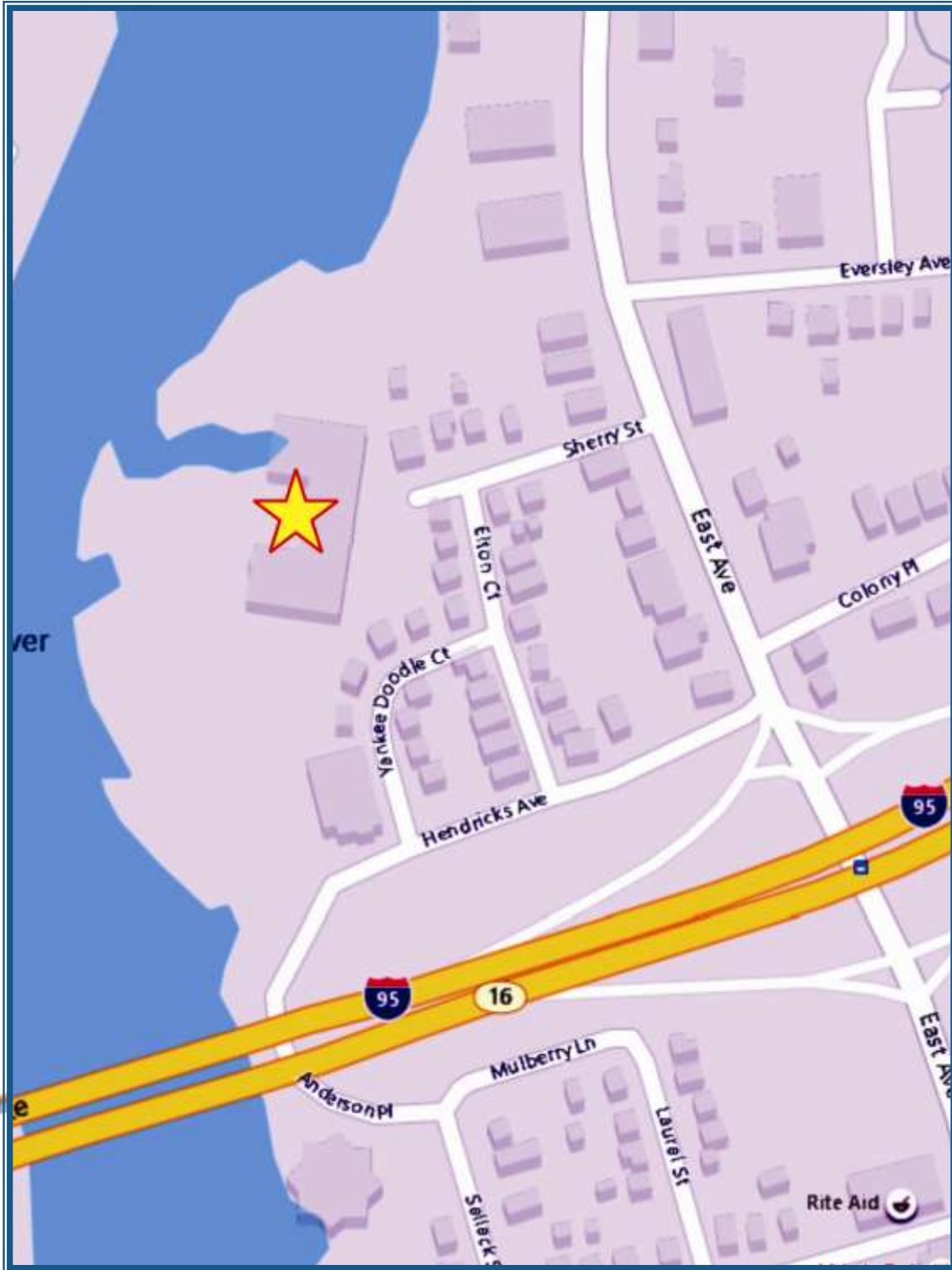
Waiting/Reception



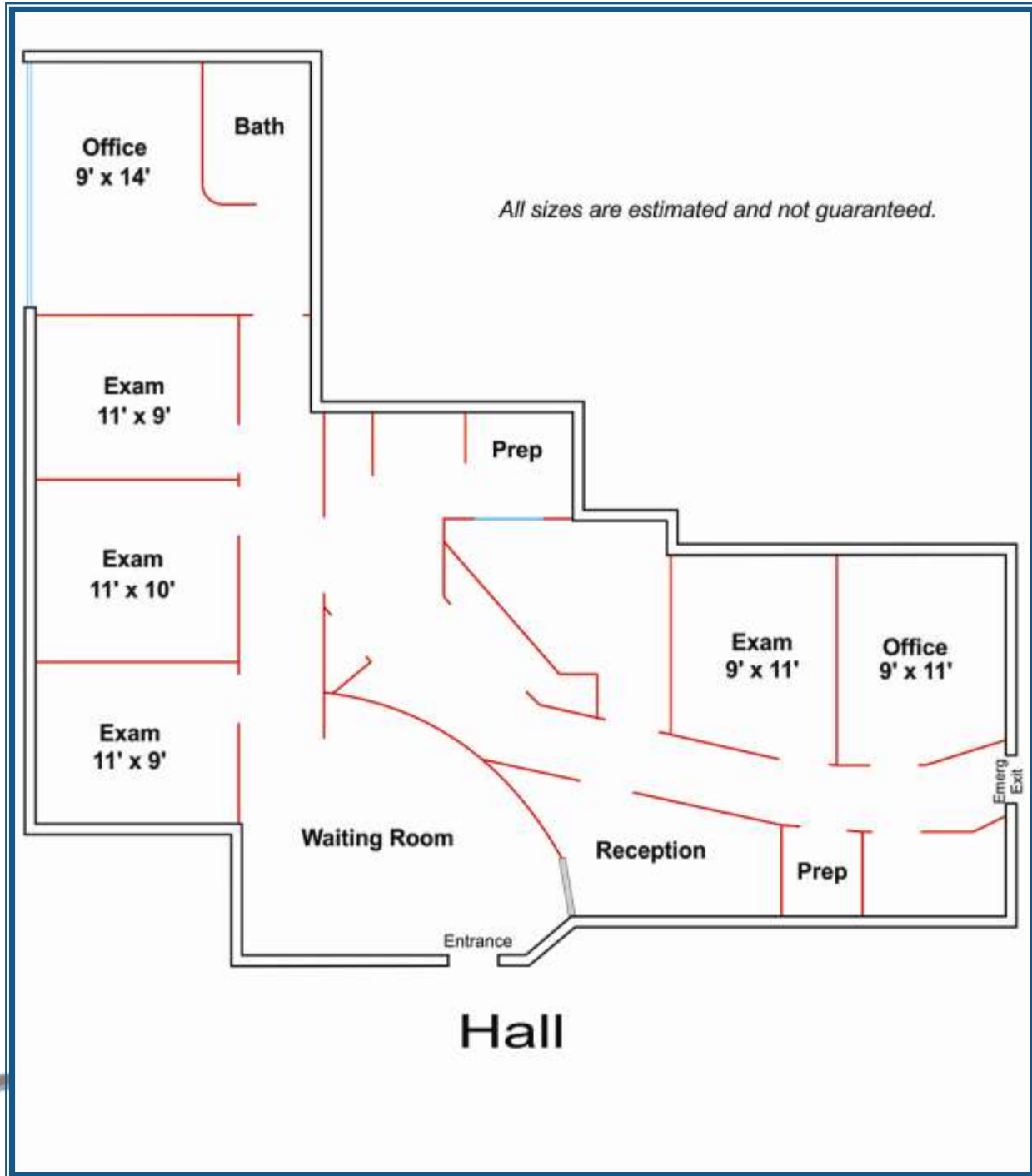
Exam Room



Street Map

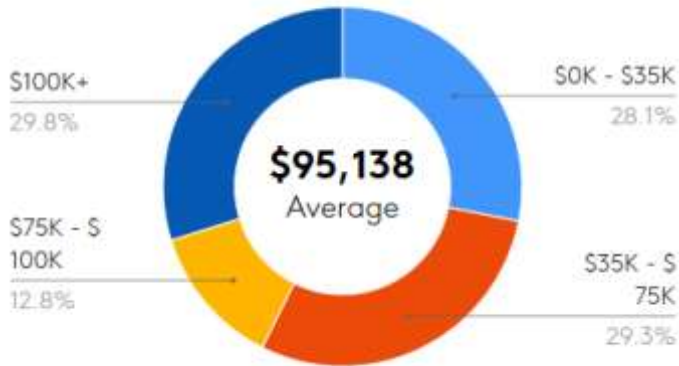


Floor Plan

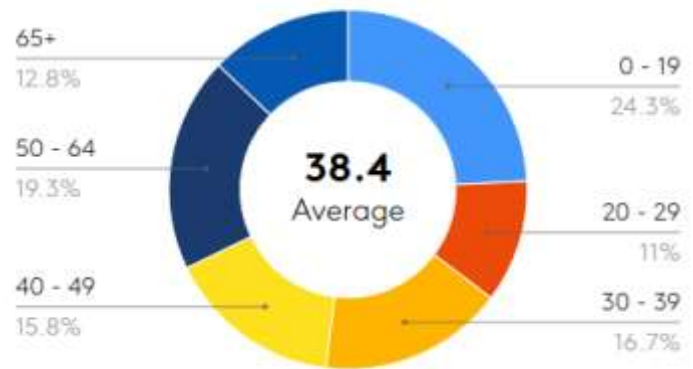


Demographics

HOUSEHOLD INCOME



AGE DISTRIBUTION



	1 Mile	3 Mile	5 Mile
Total Population	23,643	86,961	141,937
2010 Population	20,300	80,786	130,200
2024 Population	24,236	88,003	143,949
Employees	22,851	60,036	95,915
Total Businesses	2,495	5,934	9,873
Average Household Income	\$95,138	\$116,034	\$142,237
Median Household Income	\$71,154	\$86,948	\$109,446
Total Consumer Spending	\$249.46M	\$1B	\$1.8B
Median Age	38.9	40.1	41.4
Households	9,718	33,512	53,636
Percent College Degree or Above	22%	23%	28%
Average Housing Unit Value	\$405,770	\$522,334	\$678,233